

Northern Piedmont Beekeepers Association

Volume 29

Number 11

November 2008

Beekeeping Events in the Area

The **Northern Virginia Beekeeping Teachers Consortium** is offering *Practical Beekeeping for Beginners* consisting of weekly classes held from 7-9 pm mid Feb. to early April, 2009. Classes are open to adults and children (age 9 and over) who are interested in keeping bees as well as to those who are just interested in learning about honey bees. Class size is limited, register early. Teaching materials are included in the class fee of \$100 (only one fee per family unit), and includes **Mid Atlantic Apiculture (MAAREC)** Beekeeping Basic and Honey Bee Parasites, Pests, Predators and Diseases, **Kim Flotom's Backyard Beekeeping** as well as power point handouts and a one year membership in the local beekeeper associations. Classes are taught by **EAS** Master Beekeepers and experienced beekeepers. The class taught through our club will be held Tuesdays beginning February 10th. An open house to register will be held on Sunday, February 8th from 2-4pm at **Verdun Adventure Bound** near **Rixeyville, VA**. Those who have taken the class previously may come and audit it again at no cost. For more information, contact **Billy Davis** (540) 903 9274, [honey-](mailto:honey-bees.flintlock@gmail.com)

bees.flintlock@gmail.com or **Ann Harman** (540) 364 4660, ahwork-erb@aol.com. Information can also be found on our website at www.npbee.org.

Virginia's State Beekeeping Association fall meeting was held on November 1st at **Blue Ridge Community College** in Weyers Cave, Virginia. Speakers included **Dr. Jose Fuentes**, atmospheric scientist at UVA, **Dr. Wayne Esaias**, NASA oceanographer and beekeeper from Maryland, **Dr. Frank Linton**, **Dr. Wyatt Mangum**, **Dr. Rick Fell**, and our state apiarist **Keith Tignor**.



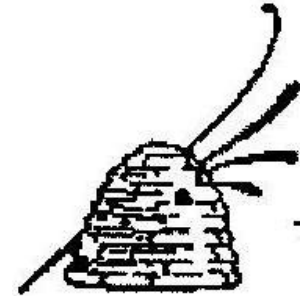
In This Issue

Beekeeping Events in the Area

This and That...

Hive Works

Found on Ann's Desk



**President &
Newsletter
Kathy Miller
434.906.0006
kfrasemiller@gmail.com**

**Vice President
Bob Duxbury
540.937.6026**

**Secretary/Treasurer
Lele Hankins
540.547.4711**

**Regional Inspector
Bob Wellemeyer
540.937.2175**

**NPBA Website
www.npbee.org**

**Webmaster
Mike Wilson**

This and That...

There is a new beekeeping journal available only on-line. It is called **BeeCraft America** and is created by the same people who publish the **British Beekeeping BeeCraft**, but this new version is geared toward North America beekeepers. The co-editors of Bee Craft America are **Dr. Dewey M. Caron** and **Ann W. Harman**. They are planning on two or possibly three sample copies. To view a copy, type into your browser <http://publishing.yudu.com/Ajz8w/BCAEAS08>. (The second to last digit is a "zero" instead of the letter "O"). One is available right now. Just send your name and email address with "**BeeCraft America**" in the Subject line to secretary@bee-craft.com. Another sample copy is planned for November. Actual launch of the magazine is planned for mid-2009.

Please make sure to mark and return your ballot for the election of officers for the club. Ballots can be brought to the November 20th meeting, or mailed to **Lele Hankins**, our secretary/treasurer at 18182 Pine View Drive, Culpeper, VA, 22701. Speaking at our November club meeting will be **Keith Tignor**, the state apiarist. There will not be a club meeting in December.

Interested in studying to become a **Master Beekeeper**? Check out the following link: <http://www.virginiabeekeepers.org/Master/MBStudyGuideQualified.pdf>

Sue Bee Honey has produced, in conjunction with SKAR Advertising of Omaha, NE, a **Special Edition** cookbook and **Black Madonna Honey** - both inspired by the Fox Searchlight Pictures feature film "**The Secret Life of Bees**," which opened in theatres nationwide on Friday, October 17. All net proceeds from the sales of the cookbook and **Black Madonna Honey** go to benefit **First Book**, a non-profit organization that gives new books to children from low-income families.

The cookbook features recipes from the main cast members **Queen Latifah**, **Dakota Fanning**, **Jennifer Hudson**, **Alicia Keys**, and **Sophie Okonedo**. The **Black Madonna Honey** features artwork from renowned artist and philanthropist **Charles Bibbs**. <http://www.suebee.com/>

The movie is based on the best-selling novel by **Sue Monk Kidd**, and features the touching story about the need for love, sisterhood and redemption. August Boatwright, played by **Queen Latifah**, is the family matriarch who operates a successful bee farm and honey-making business.

Did you know...there are about **10,000 species of bees** which roughly are divided into two main groups: Social Bees that live in colonies and Solitary Bees that live alone.

Honeybees can perceive movements that are separated by 1/300th of a second. Humans can only sense movements separated by 1/50th of a second.

NPBA 2008 Meeting Schedule

Culpeper County Extension

101 South West St.
Culpeper, VA

November 20	7:30-9:00 p.m.
December	No meeting

Guest speaker for the November meeting will be state apiarist **Keith Tignor**. This is a great opportunity to hear what he has to say about beekeeping in Virginia and to ask him any question you might have. Make plans to attend!

NPBA Membership Dues

Membership Dues are Due!

Dues are to pay for mailing the newsletter to its members, to extension services, and for meeting announcements in newspapers around the area. Please send a check for \$10 made to **NPBA** and mail to:

Lele Hankins
18182 Pine View Drive
Culpeper, VA 22701

The leaves are not all down yet but when they are, clean up your beeyard.

If your mouse guards are not on by now, you must check to make sure Mrs. Mouse has not moved in. You do not want to shut her into your hives with your mouse guard.

Check the tilt of your hives unless you are using screen bottom boards. Hives with solid bottoms should be 1/2 inch higher in back than front to keep the bottom dry during winter rains and snows. Make sure your hives have upper ventilation.

Review your bee bucket and make a note about any equipment you really need. You can place an order during the winter and have it ready for spring. Check your equipment to see what needs repair, and painting. Set pieces aside for winter work.

When you have finished all bee work, wash those coveralls. If you use those heavy gloves with long cloth "cuffs," wash them also. Dried venom in clothing is a common cause of allergy to bee stings.

Clean up your hive tools. You can put them in the dishwasher. Check your smoker to see if it needs repair. You can buy replacement bellows if those have sprung a leak.

Put unused equipment away for winter. Think about ordering more honey supers now.

Early November is positively your last chance to make sure each hive has 60 pounds of honey stored. It is easier to feed now than in the cold winter.

If you are giving honey as a gift be certain your label is on it and you give recipes along with the jar.

Take advantage of the information on honey.com.

What's Blooming this Month?

Ann Harman's list of plants blooming in November:

- Some asters in protected areas
- Maybe some chrysanthemums
- A lonely dandelion
- Some garden flowers

Honey Recipe for the Month

Peanut Honey Coffee Cake

- 2 cups packaged biscuit mix
- 2 Tbsp. granulated sugar
- 1 slightly beaten egg
- 2/3 cup milk
- 1/4 cup honey
- 1/4 cup creamy peanut butter

Directions:

Stir to combine thoroughly the first two ingredients; add egg and milk. Blend in honey and peanut butter (the mixture will not be smooth.). Turn into greased 9X9X2 inch baking pan.

Topping:

- 1/2 cup packed brown sugar
- 1/2 cup packaged biscuit mix
- 1/4 cup chopped peanuts
- 2 Tbsp creamy peanut butter
- 2 Tbsp butter
- 1/2 Tbsp ground cinnamon

Directions:

Combine until crumbly. Sprinkle on top of mixture in pan. Dot with butter. Bake at 400 degrees to 20-25 minutes. Cool and cut into squares.

Source: www.cooks.com



The selection of containers for honey is quite varied, giving us good choices to meet our customer's needs. Notice that the customer's needs are more important than what you think they should have. At a farmer's market you can certainly try honey in different types of containers and see

what sells the best, what customers ask for, and what seems to be ignored.

The "upside down" container is gaining popularity, not only for honey but also for sauces, ketchup and mayonnaise. The squeeze bear appeals to both children and adults. It's cute! The classic queenline type is generally popular. Hex jars are elegant.

Some sell in pints and quarts, a popular type in the south but not in other parts of the country. The biggest problem with the "canning" type of jar is that beekeepers are using the two-piece lid. This is a big mistake. You can buy inexpensive one-piece lids at any hardware store selling canning jars. Use only one-piece lids! Why? The two-piece ones are incredibly messy to use with honey. Two-piece lids are designed for canning, not storage.

Now before you start grumbling about the expense of containers and lids, consider who is really paying for those. Guess what—it's not you; it is your customer. Now, if you have not sat down and figured out prices for your honey in various containers you must do that. After all when you buy something in a container at the supermarket—coffee, cereal, milk—you are paying



for the container. Yes, you are. So stop grumbling about the cost of honey containers and lids. Just be sure you have those costs covered.

At a farmer's market you can offer people a refund for a returned (recycled) glass honey jar. If someone returned the lid, discard it since once sealed, it will not reseal tightly. Do not reuse plastic containers. Recycle them if possible.

Farmer's markets are a great place to interact with the customer. You can encourage increased sales if you offer the customer a one- or two-pound jar "to refill your squeeze bear." Demonstrate that the upside-down jar does not leak. "Looking for a gift?" Honey in a hex jar, of course. Someone uses lots of honey? Try the larger containers: 5-pound, half gallon, or gallon. Yes, that price per pound will be less than in individual containers, but the customer is not paying for many smaller containers.



Do you have to have a selection of labels for your selection of containers? Of course. More about that next month.

Bee Trivia

Honey bees' wings beat 11,400 times per minute.

Bees have been producing honey for at least 150 million years.

The honeycomb is composed of hexagonal cells with walls that are only 2/1000 inch thick, but support 25 times their own weight.

Theoretically, the energy in one ounce of honey would provide one bee with enough energy to fly around the world.